

Terrestrial Signal Finder

USER'S MANUAL

Please read this manual carefully before using your meter for the first time. The technical specifications and operating methods included in this manual are subject to changes without notice. In case of any inquires after a period of usage, please contact the manufacturer.

Please charge the battery before using your meter for the first time.
(Recommend 5 hours)

Contents

1. Introduction	2
2. Front Panel	2
3. Quick Installation	
3.1 Setting Language.....	5
3.2 How to receive the programs.....	5
4. STB Operation	
4.1 Main Menu.....	7
4.2 SETUP.....	8
4.3 TV/RADIO.....	17
4.4 MULTIMEDIA.....	26
4.5 GAME.....	35
4.6 Normal Play.....	38
5. Specification	49

1. Introduction

This meter is simple and convenient for getting the terrestrial signal so that you can install the antenna easily to get more stronger terrestrial signal.

2. Front Panel



- (1) AERIAL IN: Antenna input connection port
- (2) LCD Screen: Shows MENU and Programs clearly
- (3) Lock Light: This light will be on when signal is locked.
- (4) Power Light: Indicate the power status.

Normally:

Red: the meter is power on

Dim: the meter is power off

Charge:

Green: the battery is being charged,

Red: the battery is full.

- (5) Function Key: Made of four keys, F1—F4.
- (6) Arrow Key and OK key: Use the Arrow key to select the right item, OK key to confirm.
- (7) MENU Key: To enter or exit the main menu.
- (8) EXIT Key: To exit from the present menu and move to the previous menu
- (9) Numerical Key: To enter numerical settings directly.
- (10) B. Light Key: Turn on or off the LCD screen
- (11) MUTE key: Press once to turn the sound off and press it again to restore the sound
- (12) TV/Radio: Switch between TV mode and Radio mode
- (13) Power Key: To turn the meter on/off, press and hold for 2 seconds to power on the meter.
- (14) INFO: To see program information of the selected channel
- (15) Power: To switch on/off the battery power
- (16) Charge port: To connect with the charger cord.
- (17) USB Port: Connect to PC to upgrade Or Read Mp3, picture and movie



[Importance notice]

for safety reason, the battery power is switch off by the factory. so before using this meter or before charging the battery, please double make sure the "battery power switching key" should be "on" status.

[Note] Please use only the Adaptor supplied with this Finder. if you use other adaptor, maybe it will burn the battery.

3. Quick Installation

3.1 Setting Language

User can select a preferred language among various languages at Installation page.

- (1) Press <menu> button to enter Main Menu.
- (2) Press <Left/Right> button to select SETUP option.
- (3) Press <Up/Down> button to select Installation option.
- (4) Press <OK> button to enter Installation page.
- (5) Press <Up/Down> button to select OSD Language option.
- (6) Press <Left/Right> button to select a language.

See Figure 1, 2. If there is no database (scan result) in the STB, it will start at step (5) when booting.



Figure 1. Main Menu, SETUP



Figure 2. Installation Page

3.2 How to receive the programs?

Scan the possible frequency and bandwidth to receive the programs.

- (1) Press <menu> button to enter Main Menu
- (2) Press <Left/Right> button to select SETUP option.
- (3) Press <Up/Down> button to select Installation option.
- (4) Press <OK> button to enter Installation page.
- (5) Press <Up/Down> button to select Country Setting option.

- (6) Press <Left/Right> button to set Country Setting.
 (7) Press <RED/GREEN> button to Auto Scan or Manual Scan.
 See Figure 1, 2. If there is no database in the STB, it will start at step (5) when booting.

3.2.1 Auto Scan

Auto Scan will erase the database first, and scans default frequency and bandwidth by Country Setting. Follow the steps (1) ~ (6) at section 3.2.

- (7) Press <RED> button to be confirmed to clear the database.
 (8) Press <OK> button to confirm the database will be cleared and start Auto Scan
 It costs time to do Auto Scan, user can press <exit> to exit at anytime. See Figure 3, 4.



Figure 3. Clear database message

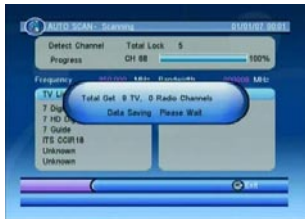


Figure 4. Auto Scan Page

3.2.2 Manual Scan

Manual Scan adds the scanning results into database, it doesn't erase the database. But User has to know the Frequency and Bandwidth for scanning. If user scans the same Frequency and Bandwidth more than once, the programs will be duplicated. Follow the steps (1) ~ (6) at section 3.2..

- (7) Press <GREEN> button to enter Manual Scan Page.
 (8) Press <Up/Down> button to select Frequency option.
 (9) Press <0~9> button to input the Frequency value.
 (10) Press <Up/Down> button to select Bandwidth option.
 (11) Press <Left/Right> button to set Bandwidth value.
 (12) Press <OK/exit> button to start scan or exit.
 See Figure 5, 6.

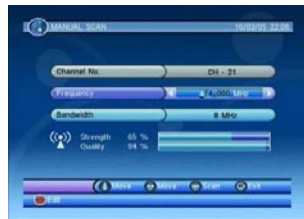


Figure 5. Manual Scan Page

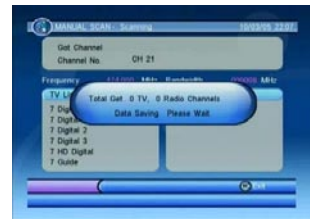


Figure 6. Manual Scan Result

4. STB Operation Describe how to operate the STB

4.1 Main Menu

Main Menu for operating a lot of functions.

- (1) Press <menu> button to enter Main Menu
 (2) Press <info> button to display the version information of STB.
 See Figure 7, 8.



Figure 7. Main Menu



Figure 8. Version Info

4.2 SETUP

Set the system settings of STB. See Figure 9.

4.2.1 Installation

Set about receiving and playing program settings of STB. See Figure 10.



Figure 9. Main Menu, SETUP



Figure 10. Installation Page

4.2.1.1 Antenna Setting

Set the antenna power on or off at Installation page.

(1) Press <Up/Down> button to select Antenna Setting option.

(2) Press <Left/Right> button to set "ON" or "OFF" for turning on or off the antenna power.

4.2.1.2 Country Setting

Set the country for Auto Scan, Manual Scan and Time Zone. Change the Country Setting will automatically change the default Time Zone value. Country Setting also has default Frequency and Bandwidth for Auto Scan.

(1) Press <Up/Down> button to select Country Setting option.

(2) Press <Left/Right> button to set the Country.

4.2.1.3 OSD Language

Set the On Screen Display Language, please reference section 3.1..

(1) Press <Up/Down> button to select OSD Language option.

(2) Press <Left/Right> button to set the language.

4.2.1.4 Audio Language

Set the audio language for watching program.

(1) Press <Up/Down> button to select Audio Language option.

(2) Press <Left/Right> button to set the language.

4.2.1.5 Subtitle Language

Set the language for displaying subtitle.

(1) Press <Up/Down> button to select Subtitle Language option.

(2) Press <Left/Right> button to set the language.

4.2.1.6 Time Zone

Set the Time Zone for adjusting the system time. Some Countries are covered with more than one Time Zone.

(1) Press <Up/Down> button to select Time Zone option.

(2) Press <Left/Right> button to set the Time Zone value.

4.2.1.7 Auto Scan

Auto Scan erases the database first, and scans default frequency and bandwidth by Country Setting. Please check the section 3.2. and 3.2.1. for more detail.

(1) Press <RED> button to start Auto Scan.

4.2.1.8 Manual Scan

Manual Scan adds the scanning results into database, it doesn't erase any database. But user has to know the Frequency and Bandwidth for scanning. If user scans the same Frequency and Bandwidth more than once, the programs will be duplicated. Please check the section 3.2. and 3.2.2. for more detail.

(1) Press <GREEN> button to start Manual Scan.

4.2.2 TV Setup

Setup the display mode for TV. See Figure 11.

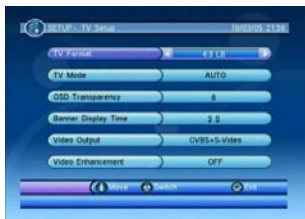


Figure 11. TV Setup Page

4.2.2.1 TV Format

Set display format for watching program, such as 4:3 LB, 4:3 PS, 16:9 LB, 16:9FIT.

(1) Press <Up/Down> button to select TV Format option.

(2) Press <Left/Right> button to set format.

4.2.2.2 TV Mode

Set PAL, NTSC or AUTO for display. AUTO will switch PAL or NTSC by program content. This setting should be matched with user's TV.

(1) Press <Up/Down> button to select TV Mode option.

(2) Press <Left/Right> button to set mode.

4.2.2.3 OSD Transparency

Set the On Screen Display transparency. 1 is the most diaphanous.

(1) Press <Up/Down> button to select OSD Transparency option.

(2) Press <Left/Right> button to set transparent value.

4.2.2.4 Banner Display Time

Set Banner displays time. Banner doesn't disappear when setting "Always". It displays at watching program. See Figure 12.

(1) Press <Up/Down> button to select Banner Display Time option.

(2) Press <Left/Right> button to set the time.

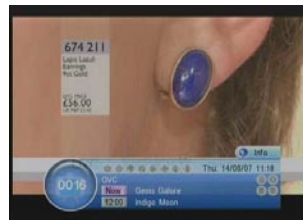


Figure 12. Banner

4.2.2.5 Video Output

Set the output method to TV.

- (1) Press <Up/Down> button to select Video Output option.
- (2) Press <Left/Right> button to set the method.

4.2.2.6 Video Enhancement

Set the Video Enhancement

- (1) Press <Up/Down> button to select Video Enhancement option.
- (2) Press <Left/Right> button to set Video Enhancement.
- (3) Press <Up/Down> button to select Flesh Tone or Black/White Expansion.
- (4) Press <Left/Right> button to set Flesh Tone and Black/White Expansion.



Figure 13. Video Enhancement

4.2.3 Password

To setup password for channel lock or censorship lock. User can change password here. The default PIN Code is 0000. See Figure 14.



Figure 14. Password Page

4.2.3.1 Channel Lock

Lock the channel (program) which has been set lock status by password when turning on the Channel Lock. About setting program lock status, please check the section 4.3.1.3. for more detail. And lock many functions by password.

- (1) Press <Up/Down> button to select Channel Lock option.
- (2) Press <Left/Right> button to turn on or off the lock setting.

4.2.3.2 Censorship Lock

Lock the program by password and censorship threshold. The censorship info is in program content. Under the censorship rating, user has to enter the password for watching program.

- (1) Press <Up/Down> button to select Censorship Lock option.
- (2) Press <Left/Right> button to set the rating.

4.2.3.3 Change Password

Change the PIN Code. If user forget the PIN Code, please contact the provider.

- (1) Press <Up/Down> button to select Change Password option.
- (2) Press <Left/Right> button to trigger changing password.
- (3) Press <0~9> button to enter old password.
- (4) Press <0~9> button to enter new password.
- (5) Press <0~9> button to confirm new password.

If success, it will display PIN Code changed message. Or it will display PIN Code Error message. See Figure 15 ~ 19.

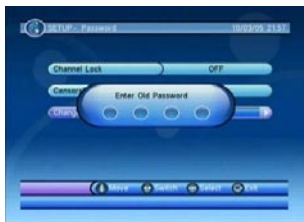


Figure 15. Enter Old Password

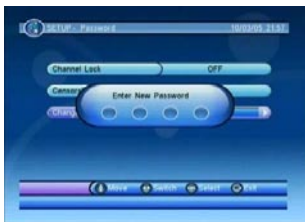


Figure 16. Enter New Password

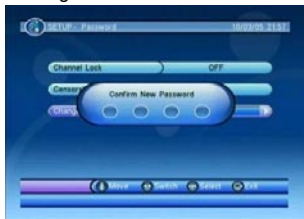


Figure 17. Confirm New Password



Figure 18. PIN Code Changed



Figure 19. PIN Code Error

4.2.4 Advance Timer

User can set event(s) for watching the program(s) by date, time and frequency. When setting date and start time is up, STB will automatically switch to program user sets. Setting here, the start time and end time depend on current system time. Please check the section 4.3.2.1 for more detail. See Figure 20



Figure 20. Advance Timer Page

4.2.5 Data Transfer

Transfer code (application), database or both to PC or STB. Transfer data by RS232 to PC, or from master STB to slave STB. See Figure 21.

- (1) Press <RED> button to set Target value.
- (2) Press <GREEN> button to set Mode value.
- (3) Press <OK> button to start transfer.

4.2.5.1 System Software Update

Update application and tsbootl by build-in card reader or USB port. See Figure 21 ~ 24.

- (1) Press <BLUE> button to enter file browser.
- (2) Press <Left/Right/OK> button to change folder and focus

*.crd file.

(3) Press <OK> button to start update.

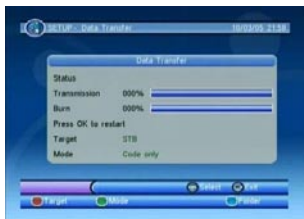


Figure 21. Data Transfer Page



Figure 22. System Software Update



Figure 23. Confirm to Start Update



Figure 24. Updating

4.2.6 Set Default

Reset STB to factory default. All settings by user has been operated will be reset default, and database will be erased at same time. See Figure 25, 26.



Figure 25. Set Default



Figure 26. Saving

4.3 TV/RADIO

There are two types of program. One is TV and the other is Radio. The operation of the List and Guide at TV and Radio are the same. Here using TV to be example. See Figure 27, 28.



Figure 27. Main Menu - TV



Figure 28. Main Menu-Radio

4.3.1 List

User can operate some functions in List. The result of operating will be displayed. See Figure 29, 30.

- (1) Press <Left/Right> button to select Tool (operation).
- (2) Press <Up/Down> button to select the program.
- (3) Press <RED/GREEN/YELLOW/1~8> button to operate.

Buttons depend on operation.



Figure 29. TV List



Figure 30. Radio List

4.3.1.1 Delete

Delete will delete the program perpetually from database. User must rescan to recover it.

- (1) Press <Left/Right> button to select Delete option.
- (2) Press <Up/Down> button to select the program.
- (3) Press <RED/GREEN> button to set delete status.
- (4) Press <YELLOW > button to confirm the operation and save the result.

Program status is changed after operating. And press <Left/Right> button will confirm and save. See Figure 31 ~ 34.



Figure 31. Delete - Select



Figure 32. Delete - Select All



Figure 33. Delete - Save



Figure 34. Delete - Saving

4.3.1.2 Skip

Skip will skip the program by channel up/down when watching program.

- (1) Press <Left/Right> button to select Skip option.
- (2) Press <Up/Down> button to select the program.
- (3) Press <RED> button to set skip status.
- (4) Press <YELLOW > button to confirm the operation and save the result.

Program status is changed after operating. And press <Left/Right> button will confirm and save. See Figure 35, 36.



Figure 35. Skip



Figure 36. Skip - Select

4.3.1.3 Lock

Lock will confirm password before watching this program when Channel Lock is turned on.

Please check the section 4.2.3.1. for more detail.

- (1) Press <Left/Right> button to select Lock option.
- (2) Press <Up/Down> button to select the program.
- (3) Press <RED> button to set lock status.
- (4) Press <YELLOW > button to confirm the operation and save the result.

Program status is changed after operating. And press <Left/Right> button will confirm and save. See Figure 37, 38.



Figure 37. Lock



Figure 38. Lock - Select

4.3.1.4 Edit

User can use Edit to edit the program name, maximum length is 16 characters.

- (1) Press <Left/Right> button to select Edit option.
- (2) Press <Up/Down> button to select the program.
- (3) Press <RED> button to display program info page.
- (4) Press <OK> button to edit program name.
- (5) Press <Up/Down/Left/Right/OK> button to select the character.
- (6) Press <RED>/<OK> button on "Save" button to return program info page.
- (7) Press <RED> button to save the editing and return to List.

If press <exit> button at step (7), it returns to List without saving. See Figure 39 ~ 44.



Figure 39. Edit



Figure 40. Edit - Select



Figure 41. Edit - Editing



Figure 42. Edit - Editing



Figure 43. Edit - Done



Figure 44. Edit - Save

4.3.1.5 Favorites

User can quickly channel up/down the favorite programs by favorite filter. There are 8 kinds of favorite for user setting. They are News, Sport, Movie, Music, Shopping, Travel, Boy, and Girl.

- (1) Press <Left/Right> button to select Favorites option.
 - (2) Press <Up/Down> button to select the program.
 - (3) Press <1~8> button to set the kind of favorite.
 - (4) Press <YELLOW > button to confirm the operation and save the result.
- Program status is changed after operating. And press <Left/Right> button will confirm and save. See Figure 45, 46.



Figure 45. Favorites



Figure 46. Favorites – Set

4.3.1.6 Search

User can search the program name by partial keyword or character(s)

- (1) Press <Left/Right> button to select Search option.
- (2) Press <RED> button to entry search page.
- (3) Press <Up/Down/Left/Right/OK> button to input keyword or character(s).
- (4) Press <RED>/<OK> button on “Search” button to return List. It will focus on the match result.

- (5) Press <GREEN/YELLOW> button to next or previous match result.

See Figure 47 ~ 50.



Figure 47. Search



Figure 48. Search character “U”



Figure 49. Search Result



Figure 50. Search Next

4.3.2 Guide

Guide is also naming EPG (Electronic Program Guide). Display program info and events. TV and Radio Guide are the same. See Figure 51 ~ 53.

- (1) Press <Up/Down> button to select program.
- (2) Press <Left/Right> button to change date.
- (3) Press <GREEN/YELLOW> button to select event.

(4) Press <BLUE> button to show event more detail.



Figure 51. TV Guide

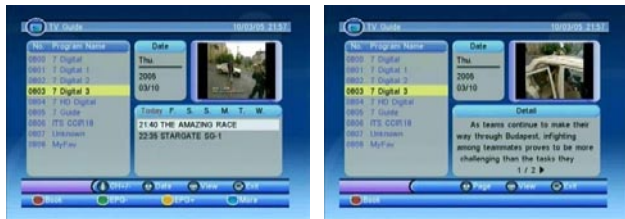


Figure 52. Guide - Event

Figure 53. Guide - Event Detail

4.3.2.1 Book

Book will remain user to watch event user sets by date and time. It is the same with Main Menu → SETUP → Advance Timer, please check the section 4.2.4. for more detail. When editing in Book, the Start Time and End Time are depended on selected event. In Advance Timer, they are depended on current system time.

- (1) Press <Up/Down> button to select program.
- (2) Press <GREEN/YELLOW> button to select event of program.
- (3) Press <RED> button to enter Book page.

(4) Press <Up/Down> button to select Event row user wants to set or modify.

(5) Press <RED/GREEN> button to start edit or delete one event.

(6) Press <Up/Down> button to focus item user wants to modify.

(7) Press <Left/Right/0~9> button to change the data.

(8) Press <YELLOW> button to save. If conflict with itself or other event, it displays conflict message.

If the date and time in the event are up, STB will automatically switch to setting program in event. Press any key except <Vol-/Vol+/mute> button, STB asks user to abort it or not at watching program. User can delete the event while it isn't at running. See Figure 54 ~ 59.



Figure 54. Book Page



Figure 55. Book - Editing



Figure 56. Book - Save



Figure 57. Book - Delete



Figure 58. Book - Conflict



Figure 59. Abort

4.4 MULTIMEDIA

Multimedia must be used with build-in card reader or USB port. Enter My Album and My Music, it displays "Initializing" when just inserting device or "Device is not ready!" without device. See Figure 60 ~ 61.



Figure 60. Multimedia



Figure 61. Device is not Ready!

4.4.1 My Album

My Album can display JPG photo and operate it. Remove device when playing photo, it displays "Device is not ready!" message and return to Main Menu. See Figure 62.

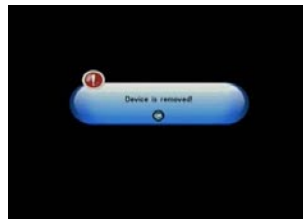


Figure 62. Remove device when playing

4.4.1.1 Thumbnail

If there is no photo in device root folder, it will start at Thumbnail mode. Or it will start at Folder mode. It displays JPG EXIF info (Width, Height and Date) of selected photo. See Figure 63.



Figure 63. Thumbnail mode

Press <Up/Down/Left/Right> button to change selected photo or page.

Press <RED/OK> button to zoom selected photo.

Press <GREEN> button to rotate selected photo.

Press <YELLOW> button to do slide show at current folder.

Press <BLUE> button to browse folders and files (photos).

4.4.1.2 Folder

If there is no photo in device root folder, it will start at Folder mode. Or it will start at Thumbnail mode. User can browser folders and files. It also displays JPG EXIF info of selected photo. See Figure 64.



Figure 64. Folder mode

Press <Up/Down/Left/Right/OK> button to browse folders or files. Press <OK> button to view (zoom) the selected photo. Press <exit> button to return Thumbnail mode with photos in current folder, or return Main Menu.

4.4.1.3 Zoom

View and zoom the photo at 100% from Thumbnail or Folder mode. See Figure 65, 66.



Figure 65. Zoom - Decoding



Figure 66. Zoom - Display

Press <GREEN> button to browse folders and files. Press <YELLOW> button to zoom in the photo. Press <BLUE> button to zoom out the photo. Press <Up/Down> button to display next or previous photo. Press <exit> button to return Thumbnail mode.

User can zoom the photo with 25%, 50%, 100%, 150%, 200%. If zooming greater than 100%, press <Up/Down/Left/Right> button can move the photo. See Figure 67 ~ 69.



Figure 67. Zoom - 50%



Figure 68. Zoom - 150%



Figure 69. Zoom - 200%, moving Zoom

4.4.1.4 Rotate

View and rotate/flip the photo from Thumbnail mode. See Figure 70, 71.



Figure 70. Edit - Decoding



Figure 71. Edit - Display

Press <RED> button, the photo will be rotated left.
 Press <GREEN> button, the photo will be rotated right.
 Press <YELLOW> button, the photo will be flipped horizontal.
 Press <BLUE> button, the photo will be flipped vertical.
 Press <exit> button to return Thumbnail mode.
 After rotating or flipping the photo and return Thumbnail mode, the result will display on Thumbnail mode. See Figure 72 ~ 76.



Figure 72. Edit - Rotate left



Figure 73. Edit - Rotate right



Figure 74. Edit - Flip horizontal



Figure 75. Edit - Flip vertical

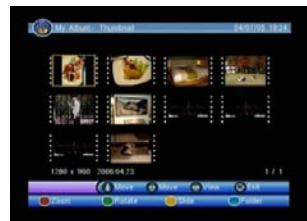


Figure 76. Thumbnail - After editing

4.4.1.5 Slide Show

Slide all photos in current folder from Thumbnail mode.

Press <RED> button to play the slide show when pausing.
 Press <GREEN> button to pause the slide show when playing.
 Press <YELLOW> button to set repeating or once.
 Press <BLUE> button to set the time interval between current and next photo.
 Press <Up/Down> button to next or previous photo right away.
 See Figure 77 ~ 83.



Figure 77. Slide Show - Play



Figure 78. Slide Show - Pause

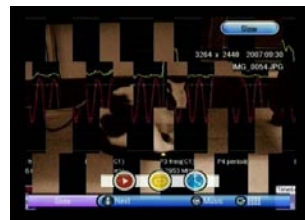


Figure 83. Slide Show - Slow



Figure 79. Slide Show - Repeat once



Figure 80. Slide Show - Repeat



Figure 81. Slide Show - Fast



Figure 82. Slide Show - Medium

4.4.2 My Music

My Music can play MP3. Remove device when playing, it will display "Device is not ready!" message, and return to Main Menu. See Figure 84.



Figure 84. Remove device when playing

Press <Up/Down/Left/Right/OK> button to browse folders and files (MP3).

Press <OK> button to play MP3 file.

Press <RED> button to play or stop MP3 file.

Press <GREEN> button to pause MP3 file.

Press <YELLOW> button to repeat selected MP3 file only.

Press <BLUE> button to random play MP3 file in current folder.
 Press <Left/Right> button to adjust volume while playing the MP3 file.
 Press <mute> button to mute.
 While playing the MP3, it displays progress, current playing time, and total time. See Figure 85 ~ 92.



Figure 85. Browse



Figure 86. Play



Figure 87. Pause



Figure 88. Repeating



Figure 89. Random



Figure 90. Play and Volume



Figure 91. Mute with volume



Figure 92. Mute

4.5 GAME

There two items in Game.
 One is Gomoku, the other is Calendar.
 See Figure 93.



Figure 93. Game

4.5.1 Gomoku

User can play with computer or someone else. See Figure 94, 95. Press <Up/Down/Left/Right> button to set play mode and difficult. Press <OK> button to start play Gomoku. Press <Up/Down/Left/Right> button to select the position. Press <OK> button to place the piece.

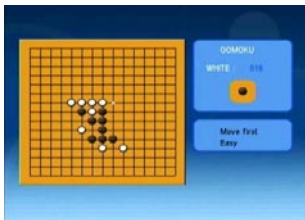


Figure 94. Gomoku

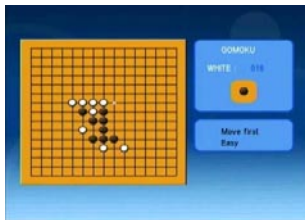


Figure 95. Playing

4.5.2 Calendar

Calendar displays the year, month, and date. See Figure 96 ~ 98. Press <Left/Right> to change year. Press <Up/Down> to change month.



Figure 96. Current Date



Figure 97. Change year



Figure 98. Change month

4.5.3 Calculator

Calculator can used for mathematical calculations.

Press <Up/Down/Left/Right> button to move the focus to the symbol you want.

Press <1~9> button to select 1~9 number.

Press <INFO> button to select.

Press <OK> button to calculate the answer.

Press <RED> button to do plus funtion.

Press <GREEN> button to do sub funtion.

Press <YELLOW> button to do multiply function.

Press <BLUE> button to do divide function

Press <EXIT> button to out calculator.

While use calculator to calculate number . See Figure 99 ~ 100.



Figure 99. Calculating number



Figure 100. The answer

4.6 Normal Play

Normal Play means STB under watching TV or playing Radio. See Figure 101, 102.



Figure 101. Normal Play - TV



Figure 102. Normal Play – Radio

4.6.1 Information

Display program's info or more detail info. Banner displays the program No., favorite setting, current time, program name, current and next event, lock, scramble, subtitle and teletext info. More detail info displays about tuner info. See Figure 103, 104.

Press <info> button to display banner to show program info. Press <info> button when banner exist to display program more detail info.



Figure 103. Banner



Figure 104. Program Info

4.6.2 Switch Program

User can channel up/down to switch program or input program number.

Press <Ch Up/Ch Down> button to next or previous program. Press <0~9/OK> button to switch program by inputting program number.

If the input program number doesn't exist, STB will ignore the input. See Figure 105.



Figure 105. Input program number

4.6.3 Program List

Display Program List with No., name, and state. And user can switch program at here. See Figure 106. Press <OK> button to display Program List.

Press <Up/Down/Left/Right/Page Up/Page Down> to preview the program.

Press <OK/exit> to switch program or return last watching program before pressing OK button.



Figure 106. Program List

4.6.4 Volume

User can adjust the volume or mute. If adjust the volume with mute, mute will be canceled. See Figure 107, 108.

Press <Vol-/Vol+> button to adjust the volume.

Press <mute> button to mute.



Figure 107. Mute



Figure 108. Volume Bar

2.6.5 Pause

Pause video and audio. But it will be canceled by any input. See Figure 109.

Press <pause> button to pause video and audio.



Figure 109. Pause

4.6.6 Audio

Switch Main or SAP sound channel. And switch output channel with LR or L or R. If setting audio language at Main Menu → Installation → Audio Language, the audio channel default language will be chosen by setting. See Figure 110.

Press <audio> button to display the audio setting page.

Press <Up/Down> button to select Channel or Sound Mode option.
 Press <Left/Right> button to set the value.
 Press <exit> button to exit the audio setting page.



Figure 110. Audio Setting Page

4.6.7 Favorites

User can switch the same favorite program by favorite filter.
 About favorites setting, please check the section 4.3.1.5. for more detail. See Figure 111, 112.

Press <fav Up/fav Down> button to switch the favorite filter.
 Press <Ch Up/Ch Down> button to switch the same favorite program.



Figure 111. Turn on favorite filter



Figure 112. Turn off favorite filter

4.6.8 Teletext

Display teletext on screen, the style of teletext may be different by content provider. See Figure 113, 114.

Press <text> button to display the teletext setting page.
 Press <Up/Down> button to select the teletext language, if the program has teletext.
 Press <OK/exit> button to exit the teletext setting page.
 Press <0~9/Up/Down/Left/Right> button to change teletext page, if teletext exists.



Figure 113. Teletext Setting Page



Figure 114. Teletext Sample

4.6.9 Subtitle

Display the subtitle on screen, the style of subtitle may be different by content provider. See Figure 115, 116.

Press <subtitle> button to display subtitle setting page.
 Press <Up/Down> button to select subtitle language, if the program has subtitle.
 Press <OK/exit> button to exit subtitle setting page.



Figure 115. Subtitle Setting Page



Figure 116. Subtitle

4.6.10 Teletext Subtitle

Display subtitle by teletext, the style of the teletext subtitle may be different by content provider. See Figure 117, 118.

Press <text/subtitle> button to display teletext or subtitle setting page.

Press <Left/Right> button to select "TTX Subtitle".

Press <Up/Down> button to select teletext subtitle language.

Press <OK/exit> button to exit the setting page.



Figure 117. TTX Subtitle in Teletext



Figure 118. TTX Subtitle in Subtitle

4.6.11 Guide

About Guide detail, please check the section 4.3.2. for more detail. Press <RED> button at normal play.

4.6.12 List

About List detail, please check the section 4.3.1. for more detail. Press <GREEN> button at normal play.

4.6.13 Browse

Browse digest of programs on screen. It can display 9 programs at once. The selected program is playing, others will display its snapshot. See Figure 119

Press <YELLOW> button to display digest.

Press <Up/Down/Left/Right> button to browse program.

Press <OK> button to switch program and watch.

Press <exit> button to return the last watching program before press yellow button.



Figure 119. Digest

4.6.14 Return

User can quick return the last watching program, also naming recall.

Press <BLUE> button to switch last watching program from current watching program.

4.6.15 Message

There are some messages to inform user the current condition.

4.6.15.1 No Signal

STB can't get signal, for example, cable is disconnected. See Figure 120.



Figure 120. No Signal

4.6.15.2 No Service

Program doesn't have any content to play. See Figure 121.

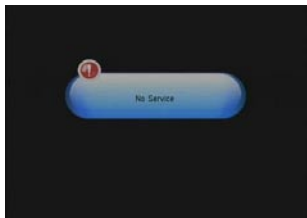


Figure 121. No Service

4.6.15.3 Service Scrambled

Program is scrambled for payment, contact the content provider to know how to descramble it. See Figure 122.

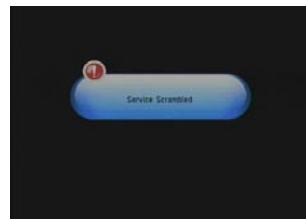


Figure 122. Service Scrambled

4.6.15.4 Antenna Overload

The power of antenna is overload. See Figure 123.



Figure 123. Antenna Overload

4.6.15.5 HDTV not support

This STB doesn't support HDTV. If the program content is HDTV, STB will display this message.

See Figure 124.



Figure 124. HDTV Not Support

4.6.15.6 Locked

Program is locked by setting lock (please check the section 4.3.1.3.) and turning on password setting (please check the section 4.2.3.1.). User must input correct password to watch program. See Figure 125, 126.



Figure 125. Lock by password

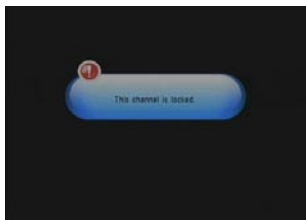


Figure 126. This channel is locked.

5. Technical Specifications

Tuner	Connector	IEC-Type, IEC 169-2, Female
	Frequency Range	74MHz to 230MHz (VHF) 470MHz to 862MHz (UHF)
	Signal Level	40dBuV - 110dBuV
	Demodulation	COFDM
	Mode	2K, 8K
	FEC mode	1/2, 2/3, 3/4, 5/6 & 7/8
MPEG Transport Stream A/V Decoding	Channel Bandwidth	6MHz/7MHz/8 MHz
	Transport Stream	MPEG-2 ISO/IEC 13818
	Profile Level	MPEG2 MP@ML
	Input Rate	15 Mbit/s Max
Memory	Video Resolution	720 x 576(PAL), 720 x 480(NTSC),
	Audio Decoding	MPEG/MusiCam LayerI&II
SDRAM	SDRAM	16Mbyte
	FLASH	8Mbyte
Serial data interface	Connector	USB type
	Li-oN Battery	1950 mA
Power supply	Supply voltage	12.6Volt
	Charger	AC 90-240V
Physical Specification	Size	9.5x15.5x4.5 (cm)
	Weight(Net)	0.5 Kg

Handling Precautions and Prohibitions of Battery in Terrestrial Meter

Warning:

You are using Lithium ion batteries or Nickel metal hydride batteries in the machine now, so please don't work under high temperature or high pressure conditions. If the following items happened, abnormal chemical reaction may occur which will lead to the battery overheat, emit smoke, ignite and/or burst.

- (1) Incinerate and dispose the battery in fire or heat it;
- (2) pierce the battery with a nail or other sharp objects, strike it with a hammer, or step on it;
- (3) Immerse the battery with water or connect the positive(+) and negative(-) terminals with a metal objects such as necklaces, hair pins, etc.

Notice:

The battery is only applicable to the charger which supplied or appointed by the manufacturer of this machine.

The charging time should be minimum 5 hours for the first time, and it should not be charged over 12 hours after the first time.

Please keep your machine off when the battery is charging.

The battery should be stored within a temperature range of 0°C to 40°C.

When stored for a long period, charge the battery at least once per half month so as to prevent over discharge.

The battery is expendable.

Handling:

Improper setting of new battery may lead to the battery burst.

Please use the battery only supplied by the manufacturer if you want to change a new battery.

Please do not put the battery in fire or dispose it together with garbage.

Please contact the waste administrative institute in your place to get the nearest battery collection station.